

# Xi24

## Expandable Power Management

The Xi24 is an installation friendly and upgradable power management system that both serves and protects. It's the perfect solution for theatres and other venues moving from conventional lighting powered by dimmers to LED based lighting that needs dependable and smart power distribution. The Xi24 can be placed anywhere – there is no dimmer “buzz” to worry about. And unlike conventional power distribution systems, the Xi24 has been purpose designed to handle difficult loads such as LED displays and LED-based lighting.

### The benefits are clear

- Upgrade as needs change
- 2 x the load capacity
- 2x the cable length handling
- Full capacity at all temperatures
- No nuisance tripping
- Fast acting overvoltage protection
- Flexible cable management
- GPIO interface for building automation

The Xi24 can optionally be fitted with comprehensive per channel load and leakage current monitoring as well as load switching. Both options selectable per 6 channels.

Like all StageSmarts products, the Xi24 is compliant with all applicable EN, VDE, BS norms and is of course both CE and UKCA certified.



# Xi24

Expandable Power Management

The Xi24 takes installed power distribution to a whole new level. It is a comprehensive and expandable power management system with high capacity and class-leading safety that can easily be upgraded with additional features and functions when required.

The compact dimensions and 2-part design of the Xi24 makes it very easy to install and can be either wall-mounted or rack mounted. This, and the flexibility in cable entry positions, makes the Xi24 a great fit practically anywhere.

- Protect
- Monitor
- Control
- Communicate

## High performance RCBOs

- 100% temperature stable
- Superior load and cable length handling
- 30mA A-type residual current protection
- Instant re-setting (no cool down time)
- VDE approved
- 1P+N type breaker

## User Interface

- Colour touchscreen with encoder wheel and return button
- Handles local settings
- USB-C port enables system setup without mains power

## Load monitoring (optional)

- Individual current monitoring
- Individual residual current monitoring
- LED indicators and remote monitoring

## Easy Access

- Removable front panel for service

## Installation friendly 2-part design

- Rear section can be pre-installed
- Easy access to wiring
- Extensive options for cable entry
- Optional brackets for 19" rack mounting
- Double outgoing connections 2.5mm<sup>2</sup> per output

## GPIO (optional)

- For external interfacing
- User configurable functionality
- Isolated inputs x 4
- Solid State Relay outputs x 2

## Input terminals

- Incoming wiring up to 50mm<sup>2</sup>

## Output terminals

- Double outgoing connections 2.5mm<sup>2</sup> per output

## Heavy duty grounding busbar

- M5 threaded holes and clamps



## Base Unit

- Main energy metering
- Touchscreen user interface
- Adjustable overvoltage protection with feedback

## System Processor (optional)

- Expanded user interface functionality
- Battery backed-up communication
- USB-C powered setup without mains power
- Dual configurable Ethernet ports for independent monitoring and control networks.

## Load Monitor (optional)

- Load current monitoring
- Residual current (leakage) monitoring
- Intelligent fault assistance
- Trend notifications and alerts

## Load Switch (optional)

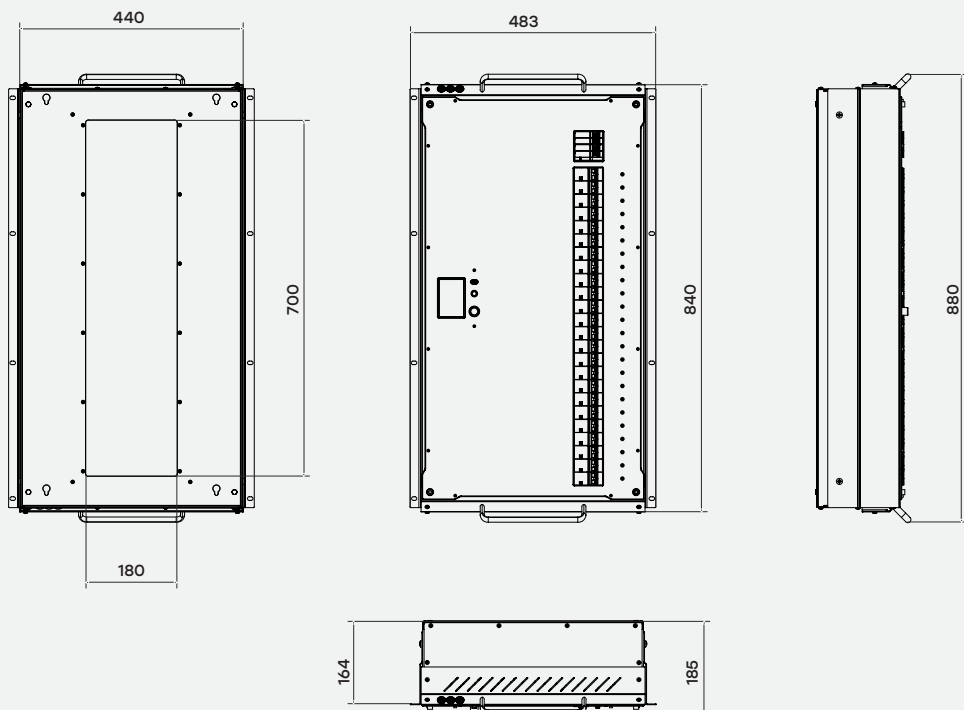
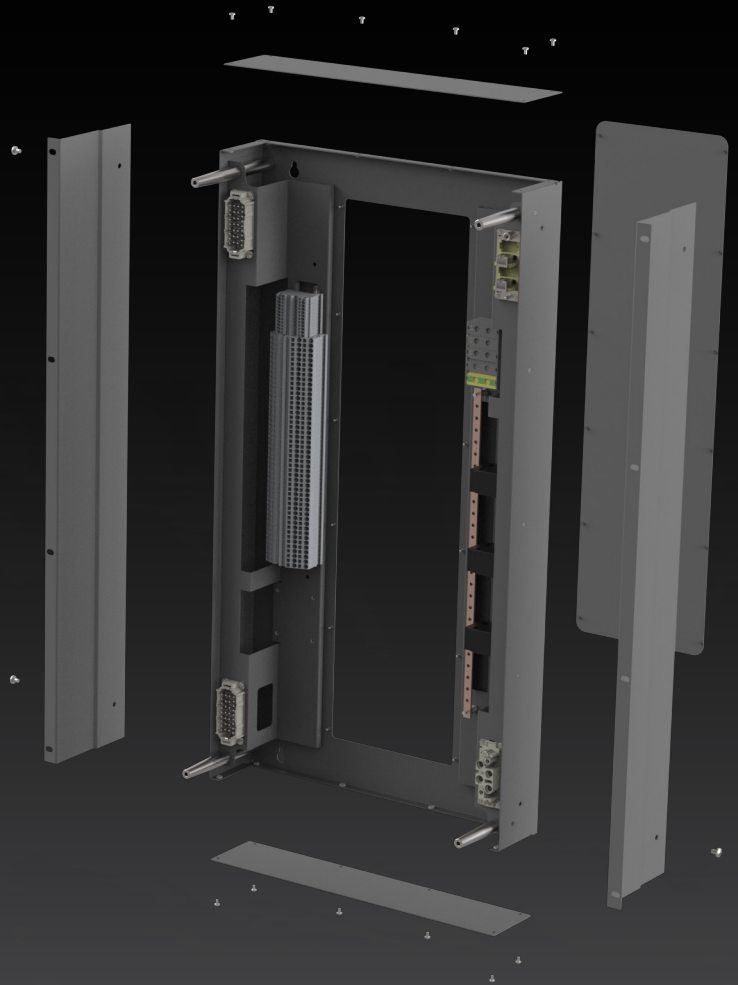
- Zero-cross switching of the main outputs
- Local control through UI
- Remote control through sACN & ArtNet
- Supports sACN and ArtNet protocols
- Programmable power sequencing

# Xi24

Expandable Power Management

Designed for easy and flexible installation and service, the Xi24 gives you multiple options to tailor itself to your needs.

- Wall or rack mountable
- Large cable bay
- Small footprint
- Multiple customizable entry points for wiring



All dimensions in mm

+46 (0) 40-16 32 63  
www.stagesmarts.com  
hello@stagesmarts.com  
Norra Ågatan 5b, SE-732 31 Arboga  
Västmanlandsgatan 3, 214 30 Malmö

StageSmarts